

A Project By
VASHISHTH DEVELOPERS

Architect



architectural-interior
+91 94274 90412

Structure Consultant

N.K.SHAH
Ahmedabad. Phone : 079-26584635

Plumbing Consultant



AQUA UTILITY CONSULTANT
Ahmedabad. Phone : 079-26937262

Electrical Consultant

HARISH SHRIRAJ
Mo. 098-98-064346

Ac Consultant

BHADRESH BHAVSAR
Mo. 098-24-071650



Site Address

Opp. Kameshwar School B/H Shell Petrol Pump,
100' Anand Nagar Road, Prahalad Nagar, Ahmedabad - 380051.
Contact : +91 98250 66909, 98250 49920, 079-32214498

FROM CONCEPT TO
CREATION





12 MT. WIDE T.P. ROAD



9 MT. WIDE T.P. ROAD



12 MT. WIDE T.P. ROAD

ENTRANCE GATE

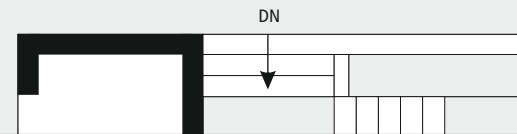
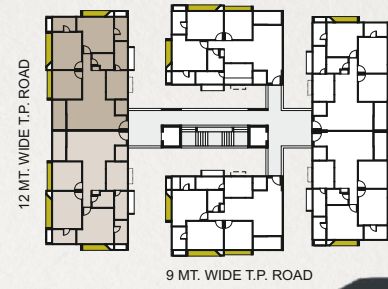


GARDEN

TWO WHEELER PARKING

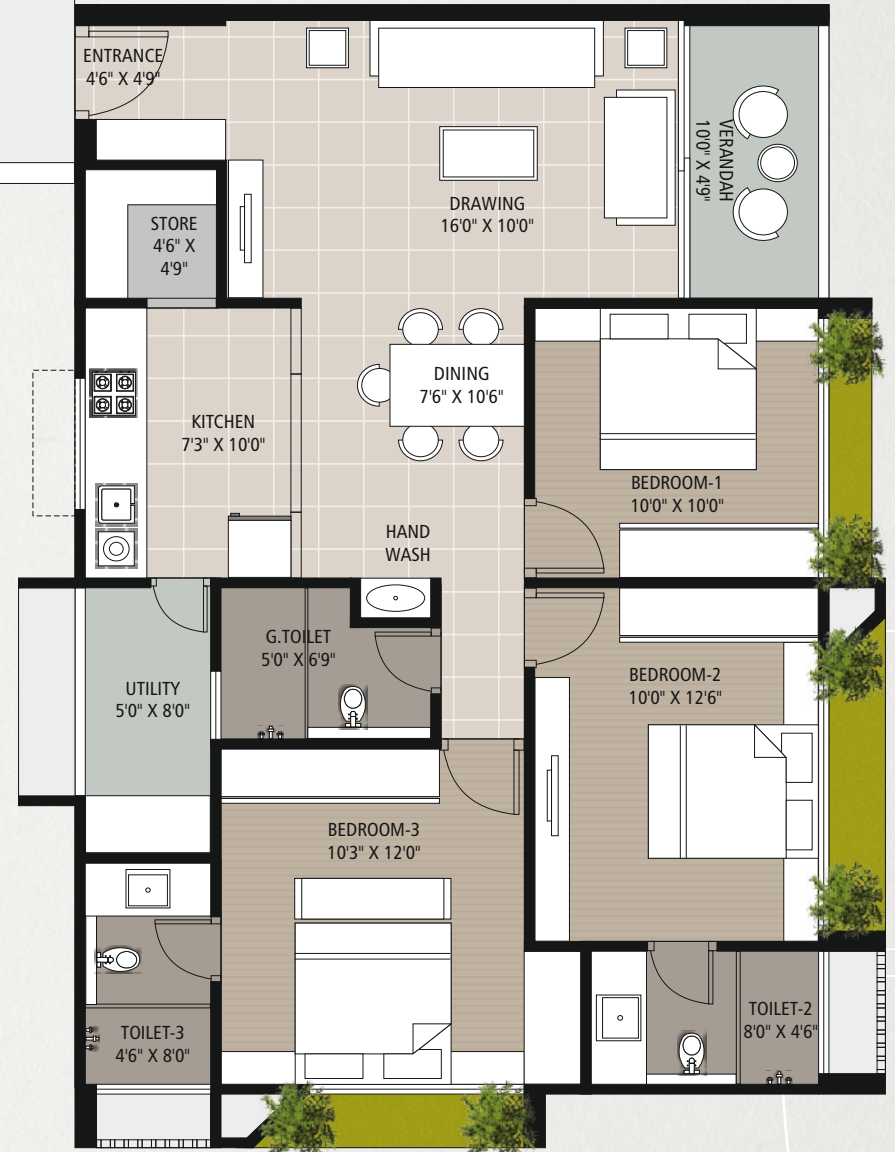
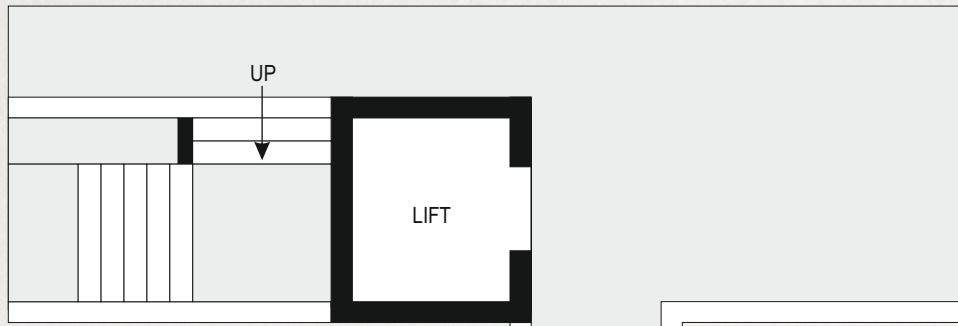
PEDESTRIAN ENTRY

9 MT. WIDE T.P. ROAD



DREAM HOME

Tranquility and serenity imparts utmost peace at the end of the day. Awake fresh. Your new neighbors are temple, swings, lawns, whispering benches, birds, colours, music. Go for yoga kirtan or even fun-parties.





THE BEAUTY

Having permitted space and precious resources, Vraj Oriana changes rules of the game. Eco centric, serene and integrated. The residency premium possession in the elite locality.





vival
oriana





SPECIFICATION

Flooring

- Drawing, dining and kitchen area 800 x 800 or equivalent size premium quality vitrified tiles.
- Wooden flooring in master bedroom.
- Premium quality vitrified tiles flooring in other bedroom and other area.
- Granite (Sandwich) platform in kitchen and counter for wash basin in toilet area.
- Dado above kitchen platform and toilet area with designer tiles up to lintel level.
- Kota stone shelves in store room.
- 4" height tiles dado in utility area.
- Complete stone lining jambs in all windows.

Door

- Main Entrance door with best quality w/p. flush door with both side veneer and leaping, with mat finish polish.
- Other doors with both side laminates.

Window

- Powder coated aluminum sliding window with safety grill.

Sanitary Ware :

- CERA, hindware or equivalent brand sanitary vessels.
- Jaquar or reputed brand bathroom fittings.

Electricals

- 3 Phase good quality ISI copper wiring & cabling with modular accessories, MCB for all distribution panels.

A.C.

- A.C. copper piping with drain line, indoor & outdoor power supply points as per our A.C. consultant's design.

Note

- A.C. related work will be provided to maintain esthetical value of the building.

Water Supply

- 24 hours water supply with pressure system from own bore well.
- Sufficient U.G. water storage for water supply.
- Separate tank for narmada water storage.
- Provision of Narmada water supply for drinking in kitchen.

Paint Work

- Complete internal surface will be with good quality wall putty, ready for paint work.
- External surface with different type of materials for excellent esthetic looks.

GENERAL AMENITIES

- Attractive entrance foyer
- Well landscaped and complete dust free paved campus
- Senior citizen sit out
- Club house
- Gymnasium
- 24 hours security
- Surveillance system with CCTV camera
- Sufficient parking for car & two-wheelers
- Fully automatic (Reputed make) elevators



HEAVEN ON EARTH

Stroll aimlessly or float on the pond. Nature around you is always ready to sooth your senses.

The sun hangs low just before it sinks beneath the horizon.

Location Map



Terms

- Stamp duty registration charges, VAT, service tax, Legal charges, Power company charges & society maintenance charges, etc. shall be borne by purchaser.
- Any new taxes announced by the Government / S.M.C / Authority will be born by the member / buyer during the project.
- Irregular payment may lead to cancellation of booking.
- Purchasers are strictly NOT PERMITTED to make changes alteration on any including elevation, external colour scheme or any other change affecting the overall design concept & outlook of the building.
- This brochure is intended only for easy display & information of the scheme & does not form part of the legal document.
- The developer reserves all rights to make any changes in the scheme including technical specification, designs, layout plan & all the purchaser shall abide by such changes.

SPECIFIC WORK DESIGNED BY SPECIFIC DESIGNER.
SPECIFIC WORK EXECUTE WITH SPECIFIC EXPERTISE.